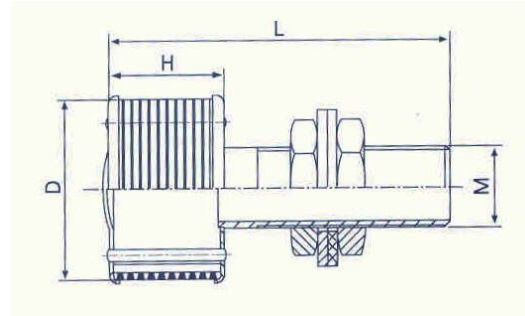


STAINLESS STEEL FILTER NOZZLES (STRAINER)



The nozzles can be used for liquid separation or media retention (resin, sand, carbon...). The nozzles are mounted on the nozzle plate. The dimensions and the distribution of the nozzles on the nozzle plate can be altered to obtain an optimized flow distribution. The liquid or gas can flow through the nozzles while the media is retained in the vessel by the nozzles.

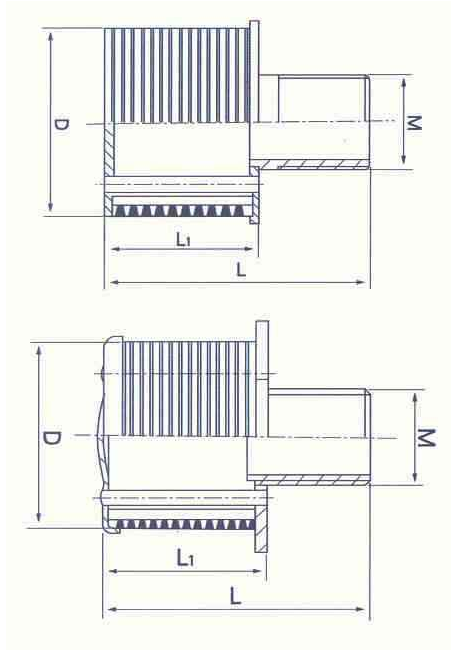
Specification:-

Slot Width : 0.2mm or 0.5mm

Material : Stainless Steel 304 or Stainless Steel 316

Model	Slot Size (in mm)	Outer Dimension (OD)			
		D	H	L	M
RYS 45-1-A	0.2 / 0.5	45	25	80	M25
RYS 45-1-B	0.2 / 0.5	45	35	90	M25
RYS 45-1-C	0.2 / 0.5	45	45	100	M25
RYS 53-2-A	0.2 / 0.5	53	35	90	M25
RYS 53-2-B	0.2 / 0.5	53	45	100	M25
RYS 53-2-C	0.2 / 0.5	53	50	110	M32
RYS 57-3-A	0.2 / 0.5	57	35	100	M32
RYS 57-3-B	0.2 / 0.5	57	45	110	M32
RYS 57-3-C	0.2 / 0.5	57	55	120	M32
RYS 70-4-A	0.2 / 0.5	70	45	110	M32
RYS 70-4-B	0.2 / 0.5	70	55	120	M32

Note : Please provide thickness of nozzle plate before ordering.

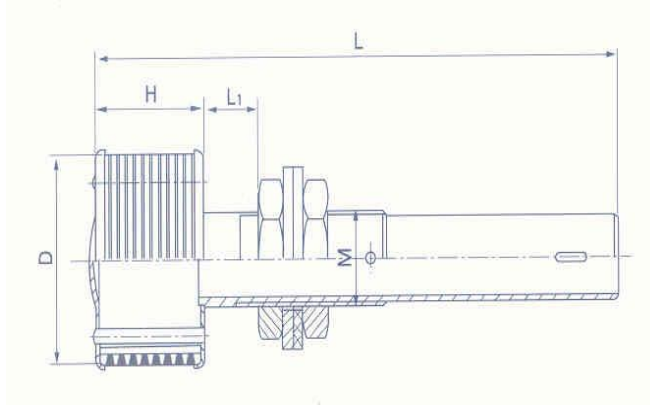


Specifiation:-

Slot Width : 0.2mm or 0.5mm

Material : Stainless Steel 304 or Stainless Steel 316

Model	Slot Size (in mm)	Outter Dimension (OD)			
		D	H	L	M
RYS 45-19-A	0.15 / 0.25	45	45	65	M25
RYS 45-19-B	0.15 / 0.25	45	35	55	M25



Specification:-

Slot Width : 0.2mm or 0.5mm

Material : Stainless Steel 304 or Stainless Steel 316

Model	Slot Size (in mm)	Outter Dimension (OD)			
		D	H	L	M
RYS 45-11-A	0.2 / 0.5	45	35	150	M25
RYS 45-11-B	0.2 / 0.5	45	40	160	M25
RYS 53-12-A	0.2 / 0.5	53	45	170	M25
RYS 53-12-B	0.2 / 0.5	53	50	180	M32
RYS 57-13-A	0.2 / 0.5	58	45	190	M32
RYS 57-13-B	0.2 / 0.5	58	50	200	M32

L1 – Kindly advise the nozzle plate's thickness